

# Guideline of Tool Tag Pictures Rev3

4.2015



# ✧ Requirements

---



**All tools must be marked containing the following minimum 2 pieces of information:**

- 1) “Property of General Motors”
- 2) The Complete Tool ID Number(SL provides this number)

**Your options for doing so are to etch, stamp or engrave directly onto the tool or use a tag. If a tag is used, the following applies:**

- Tags must be attached to the tool using rivets or screws.
- The information placed on the tag must be stamped or legibly engraved.

In cases where the tool or tools are too small to etch, engrave, stamp or tag, place the tool or tools into a box or container. Then tag the container using the parameters set above.

# ❖ Acceptable Tags

## TAG DESCRIPTION/SIZE:

Suppliers may create their own tags providing they satisfy the requirements above. Acceptable tool tags are displayed below. The standard tag is Tag “A “. Tags “B” and “C” may be used at the supplier’s discretion.

TAG “ B “

PROPERTY OF GENERAL MOTORS	
TOOL NO.	
PART NAME	
PART NO.	

5 inches / 12.7cm

3 Inches / 7.6cm

TAG “ C “

PROPERTY OF GENERAL MOTORS	
TOOL NO.	
PART NAME	
PART NO.	

3 Inches / 7.6cm

2 Inches / 5.2cm

PROPERTY OF GENERAL MOTORS	
TOOL NO.	

2.5 Inches / 6.35cm

1 Inch / 2.5cm

TAG “ A “

# 1. Tool Sample



**Tool Number Close-Up**

**NOTE: 3 kinds of tool pictures are required**

1. Tool number Close-up
2. Complete Tool picture: Open position
3. Complete Tool picture: Closed



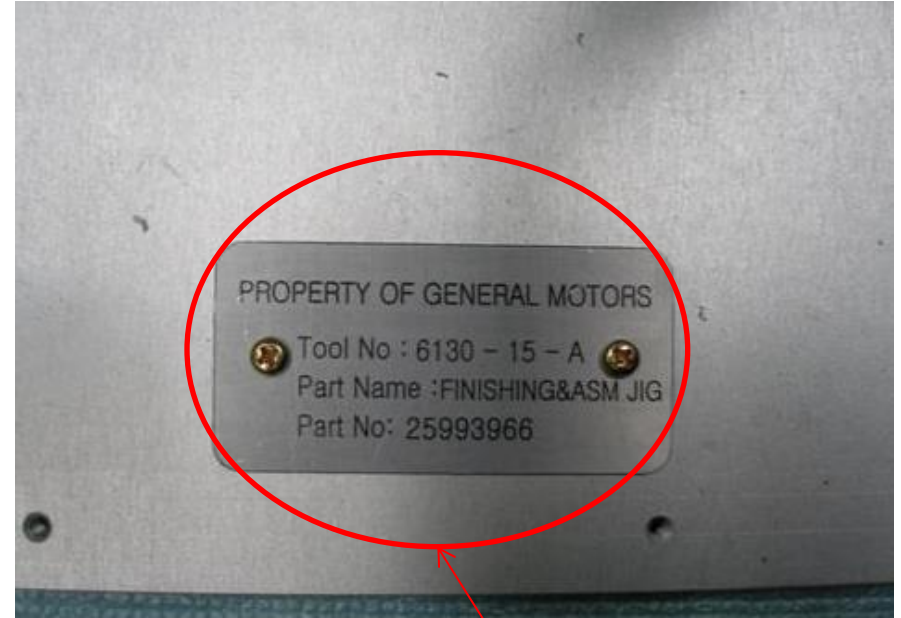
**Complete Tool Picture: Open Position**  
※ **Tool Tag must be visible in the complete tool picture.**



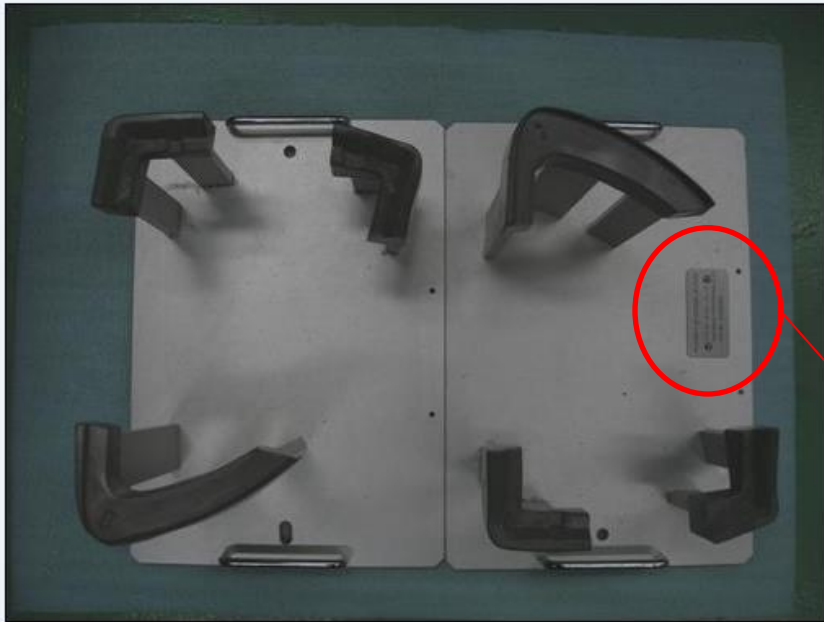
**Complete Tool Picture: Closed**

## 2. Jig Sample

**NOTE: THE PICTURE SHOULD BE A PICTURE OF THE TOOL. IT MUST SHOW THAT THE TOOL IS MARKED WITH TOOL ID NUMBER AND "PROPERTY OF GM"**

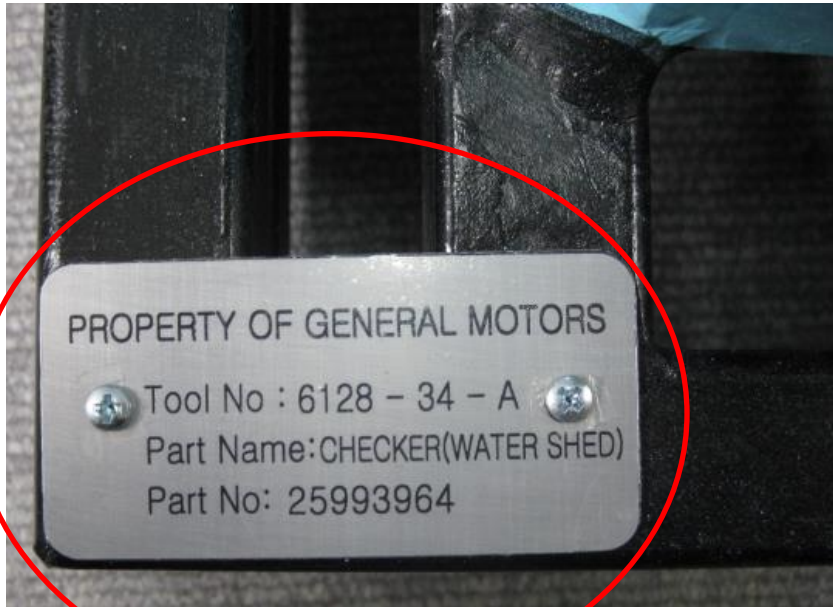


**Tool Number Close-Up**



**Complete Tool Picture: Open Position**  
**\* Tool Tag must be visible in the complete tool picture.**

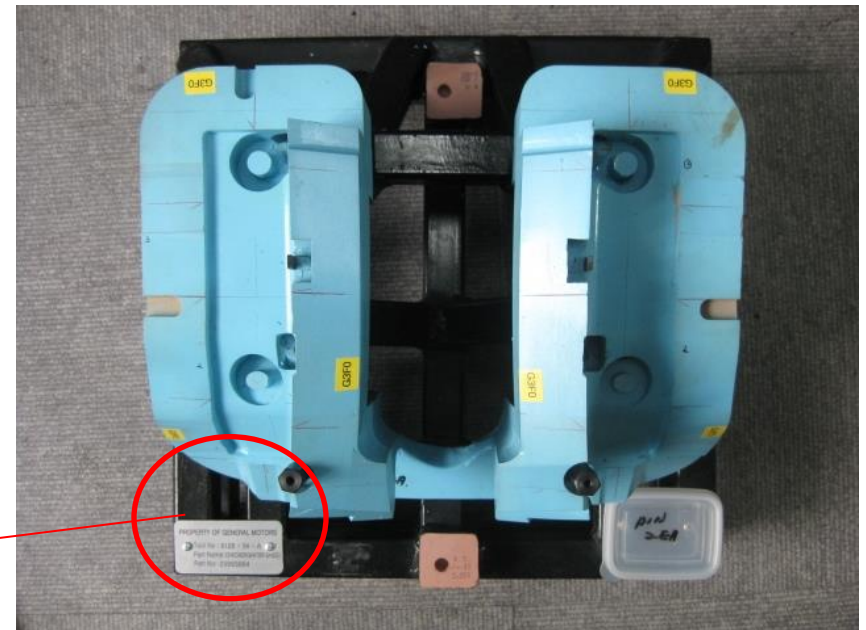
### 3. Fixture Sample



**NOTE: THE PICTURE SHOULD BE A PICTURE OF THE TOOL. IT MUST SHOW THAT THE TOOL IS MARKED WITH TOOL ID NUMBER AND "PROPERTY OF GM"**

**Tool Number Close-Up**

**Complete Tool Picture: Open Position**  
**\* Tool Tag must be visible in the complete tool picture.**





# ❖ Unacceptable Practices

- Tags that state “GM Owned” or just “GM”
- Using paint or magic marker to place ID numbers directly on a tool or onto a tag
- The use of any adhesives, tape, soldering or welding is not allowed
- Tag Engravings/ Stampings that are not legible
- Incomplete information on the tag

